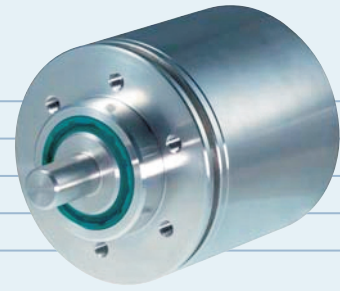


AX 700

EXPLOSION PROOF
ABSOLUTE ENCODER



Ex d IIC T6 (T4) Protection "d"
ATEX-Directive 2014/34/EU
Heavy Duty Construction
IP66/67 Protection
Up to 13 Bits (8192)
5VDC or 8 to 30VDC



APPROVAL CERTIFICATIONS

Ex I M2 Ex d I Mb

Ex II 2 G Ex d IIC T4 Gb

Ex II 2 G Ex d IIC T6 Gb

Ex II 2 D Ex tb IIIC T70°C Db

Norms: EN 60079-0:2012 incl. A11:2013; EN 60079-1:2007;
EN 60079-14:2014; EN 60079-31:2009

Standards: IEC 60079-0:2011 6th edition; IEC 60079-1:2007 6th edition;
IEC 60079-31:2008 1st edition

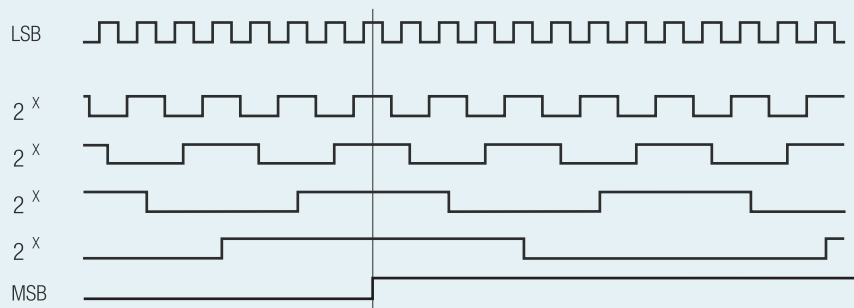
ELECTRICAL SPECIFICATIONS

Supply Voltage	5VDC or 8 to 30VDC
Current Consumption	max. 100 mA
Output Circuit	Push-Pull
LSB Frequency	100 kHz (max)
Signal Level (high)	Vcc - 0.7 Volt
Signal Level (low)	0.25 Volt (max)
Short Circuit Protection	100%
Screened Cable	Chemically Resistant Flame Retardant

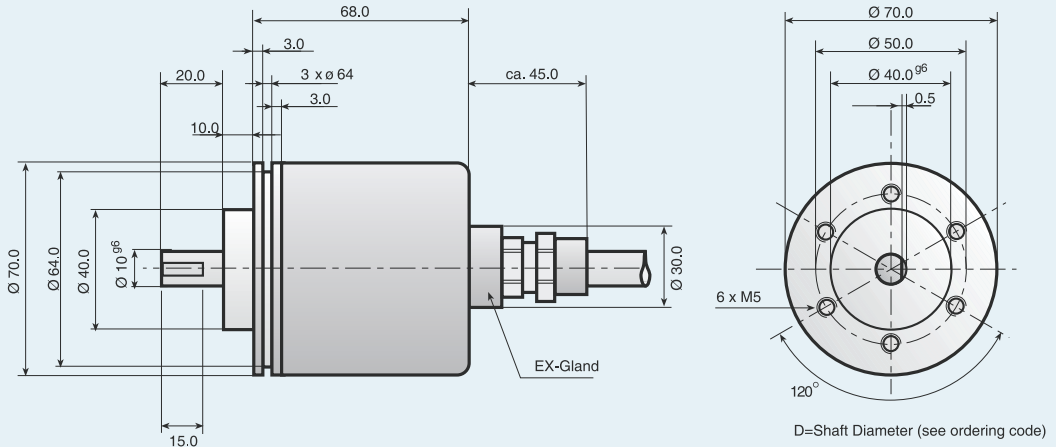
MECHANICAL SPECIFICATIONS

Cover	Stainless Steel
Bearing Housing	Stainless Steel
Shaft	Stainless Steel
Maximum RPM	6000 RPM (max)
Torque	> 0.4 Nm
Shaft Loading	Axial 60 N, Radial 50 N
Environmental Protection	IP66/67
Operating Temperature	-20°C to +70°C
Weight	1300 g (2.866 lbs)

OUTPUT SIGNALS



Gray Code shown - Binary code also available



ORDERING CODE

AX 700 - -

a b c d e f g h Resolution

- a Group Function**
AX=Absolute Flame Proof
- b Basic Series Number**
X700
- c Shaft Size**
10=10 mm
12=12 mm
- d Mechanical Options**
0=None

- e Connection Type**
0=2 m (6') Cable
- f Connection Location**
A=Axial
- g Output Signals**
E=Binary Code <->
F=Gray Code <->
- h Output Circuit Type**
1=Push-Pull 5 Vdc
5=Push-Pull 8 to 30 Vdc

Notes:
Special functions and designs will be designated by a 4 digit code at the end of the part number. Consult factory for further details

CONNECTIONS

Function	Cable Colour Code	Function	Cable Colour Code
0 Volt	white	2 ⁷	violet
+ Volt	brown	2 ⁸	grey/pink
2 ⁰	green	2 ⁹	red/blue
2 ¹	yellow	2 ¹⁰	white/green
2 ²	grey	2 ¹¹	brown/green
2 ³	pink	2 ¹²	white/yellow
2 ⁴	blue	<->	white/grey
2 ⁵	red	Earth	screen
2 ⁶	black		